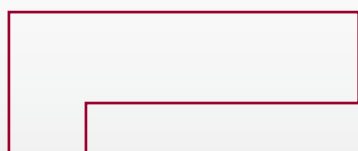
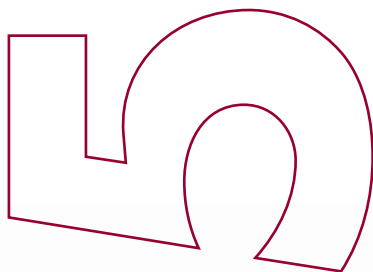




# 500 Series Distribution Systems

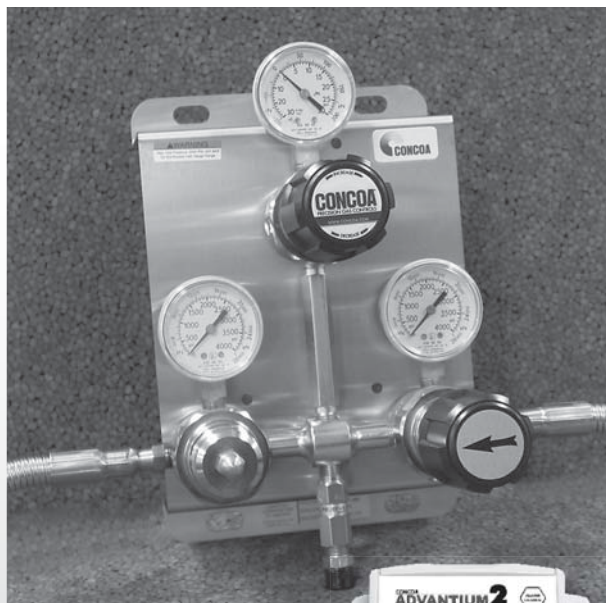
## SilcoNert™ 1020 Switchover



The 515 Series SilcoNert 1020 is an automatic switchover system designed to deliver a continuous supply of reactive, corrosive, or high purity gases for calibration, instrument support, or process control. The proprietary amorphous Silicon surface finish provides extreme inertness and corrosion resistance over 316L Stainless Steel. The system comes with either flexible hoses for use with two cylinders To maintain constant downstream pressure an integral line regulator option is available.

### Typical Applications

- Reactive calibration standard
- Emmisions monitoring
- H<sub>2</sub>S and reduced sulfur calibration standards
- Mercury calibration standards
- Low level sulfur in hydrocarbon gas control
- Corrosive gases
- Ultra high purity instrument pure gases



Shown with attached flexible hoses. Available with optional remote alarm.



### Features

- 400 Series Stainless Steel Regulators**  
Capsule® seat
- Metal-to-Metal Diaphragm Seal**  
No possibility of gas contamination
- User-Friendly Priority Valve**  
One knob switches cylinder priority
- Check Valves in Inlet Gland**  
Prevents contamination and back flow.
- Compatible with Maniflex Manifolds**  
Multiple cylinders per side
- Optional Line Regulator**  
Stable line pressure during change over
- Optional Remote Alarm**  
Easy integration with Advantium system

### Materials

- Bodies**  
SilcoNert 1020 coated 316L stainless steel barstock
- Bonnet**  
Chrome plated brass barstock
- Diaphragms**  
SilcoNert 1020 coated 316L stainless steel
- Seats**  
PTFE  
PCTFE with 4500 PSIG inlet option
- Filters**  
< 10 micron SilcoNert 1020 coated patented 316L stainless steel mesh
- Internal Seals**  
PTFE

### Specifications

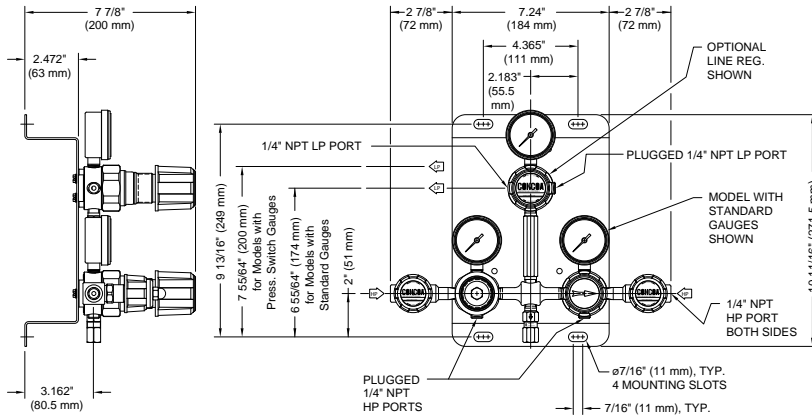
- Maximum Inlet Pressure**  
3000 PSIG (210 BAR)
- Temperature Range**  
-40°F to 140°F (-40°C to 60°C)
- Gauges**  
2" diameter stainless steel (bourdon tube not coated)
- Outlet Connection**  
1/4" MPT (without line regulator)  
1/4" FPT (with line regulator)
- Helium Leak Integrity**  
1 x 10<sup>-8</sup> scc/sec
- Cv**  
0.1
- Weight**  
8.25 lbs. (3.71 kg)

# 500 Series Distribution Systems

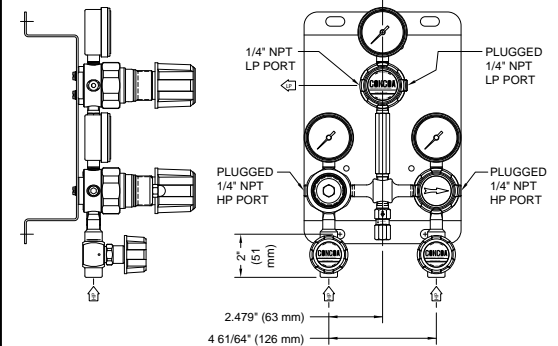


## Installation Information

Diaphragm Valves on Side Ports



Diaphragm Valves on Bottom Ports



## Ordering Information

515	A	B	C	D	-CON
Series 515	Switching Pressure (Priority R/L)	Inlet Connection	Line Regulator	Assembly	Installed Options
	<b>4:</b> 200/170 PSIG	<b>0:</b> 1/4" FPT ports	<b>0:</b> None	<b>1:</b> 0-4000 PSI/kPa gauges* no alarm capability	Please specify inlet connection (if applicable)
	<b>5:</b> 500/470 PSIG	<b>1:</b> Flexible stainless steel hoses (36")	<b>1:</b> 0-15 PSIG	<b>2:</b> 0-4000 BAR/PSI gauges* no alarm capability	CGA DIN 477
	<b>8:</b> 300/270 PSIG	<b>2:</b> Manifold connectors*	<b>2:</b> 0-50 PSIG	<b>3:</b> 0-4000 BAR/PSI* with pressure switches† and 110V remote alarm	BS 341 and others available
		<b>3:</b> Flexible stainless steel hoses (24")	<b>3:</b> 0-100 PSIG	<b>4:</b> 0-4000 BAR/PSI* with pressure switches† and 220V remote alarm	
		<b>4:</b> Diaphragm valves with 1/4" FPT port	<b>4:</b> 0-250 PSIG	<b>8:</b> 0-4000 BAR/PSI* with pressure switches† and without remote alarm	
		<b>5:</b> Diaphragm valves with hoses (36")	<b>5:</b> 0-400 PSIG	†Intrinsic safety barriers are required for flammable gas service or for use in hazardous environments.	
		<b>7:</b> Diaphragm valves with hoses (24")	<b>7:</b> 0-150 PSIG		
		<b>8:</b> Flexible stainless steel hoses (72")			
		<b>A:</b> Flexible stainless steel hoses (72") with diaphragm valve			
		* See page 36 and 37 for manifold ordering information			