



500 Series Distribution Systems

Maniflex™

The 52B, 52C and 52S Series Maniflex are modular gas distribution systems that may be connected to regulators, dual regulator switchovers, IntelliSwitch and AutoSwitch systems. A modular gas distribution system allows the user to size the inlet capacity of a system so that cylinder changes will not be as frequent. The Maniflex system provides the user with the capability of purchasing an unlimited number of manifold stations connected to a single header. The Maniflex headers themselves may be purchased as a complete system (un-assembled) or as individual components.



52B 1232- shown

Ask About Our

EXTENDED
WARRANTY

On This CONCOA Product

Features

Modular Design

Flexible field installation

Integral Diaphragm Valves

Leak-tight integrity
Independent shut-off capability

Expandable System

Future growth capability

**Brass, Chrome-Plated Brass or
Stainless Steel**

No possibility of gas contamination

Metal to Metal Field-Assembled Joints

Easy leak-tight field assembly
Ease of transportation

**Silver-Brazed or TIG Welded
Connectors**

Contamination-free installation

Materials

Diaphragm Valve

Body: Brass or stainless steel barstock
Seat: PCTFE
Stems: 303/304 stainless steel
Diaphragms: Elgiloy®

Flexible Hoses

316L stainless steel
Monel® inner core for oxygen service
PTFE inner core for 6000 PSIG

Specifications

Maximum Inlet Pressure

3000 PSIG (210 BAR)

Temperature Range

-40°F to 140°F

Header

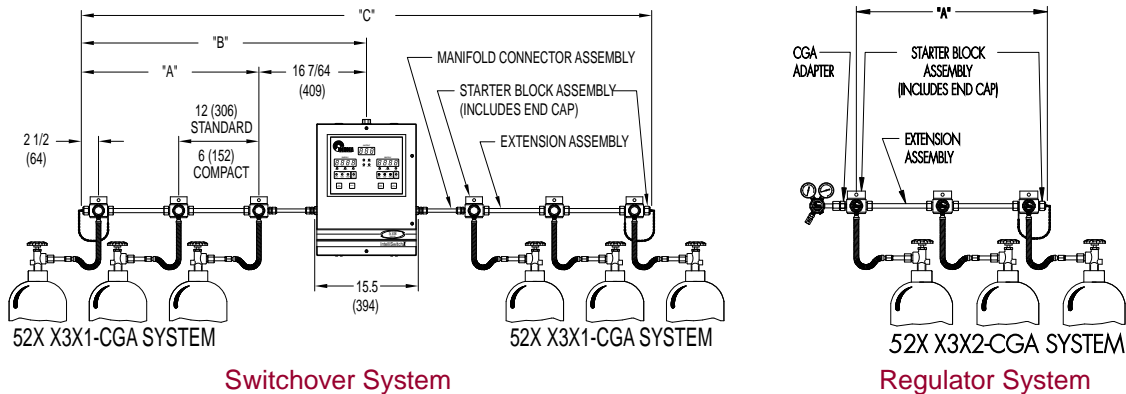
0.625 OD x 0.188 wall (Brass)
0.625 OD x 0.095 wall (Stainless)

500 Series Distribution Systems



Dimensions ("A", "B", and "C" refer to the lengths specified on the diagram below.)

Cylinders per Side	1	2	3	4	5	6	7	8	9	10
"A" standard (single row)	2.5"	14.5"	26.5"	38.5"	50.5"	62.5"	74.5"	86.5"	98.5"	110.5"
"B" standard (single row)	18.6"	29.6"	42.6"	54.6"	66.6"	78.6"	90.6"	102.6"	114.6"	126.6"
"C" standard (single row)	37.3"	59.3"	85.3"	109.3"	133.3"	157.3"	181.3"	205.3"	229.3"	253.3"
Weight standard (brass single row)	3.45 lbs	7.07 lbs	10.69 lbs	14.31 lbs	17.93 lbs	21.55 lbs	25.17 lbs	28.79 lbs	32.41 lbs	36.03 lbs
Weight standard (ss single row)	3.33 lbs	6.45 lbs	9.57 lbs	12.69 lbs	15.81 lbs	18.93 lbs	22.05 lbs	25.17 lbs	28.29 lbs	31.41 lbs
"A" compact (single row)	2.5"	8.5"	14.5"	20.5"	26.5"	32.5"	38.5"	44.5"	50.5"	56.5"
"B" compact (single row)	18.6"	24.6"	29.6"	36.6"	42.6"	48.6"	54.6"	60.6"	66.6"	72.6"
"C" compact (single row)	37.3"	49.3"	59.3"	73.3"	85.3"	97.3"	109.3"	121.3"	133.3"	145.3"
Weight compact (brass single row)	3.45 lbs	6.62 lbs	9.79 lbs	12.96 lbs	16.13 lbs	19.3 lbs	22.47 lbs	25.64 lbs	28.81 lbs	31.98 lbs
Weight compact (ss single row)	3.33 lbs	6.27 lbs	9.21 lbs	12.15 lbs	15.09 lbs	18.03 lbs	20.97 lbs	23.91 lbs	26.85 lbs	29.79 lbs



Ordering Information

52X	A	B	C	D	-CON
Series	Orientation	Stations	Hose Style	Outlet Connection	Hose Connection
52B Brass	1: Standard single row (right or left) (one cylinder/station)	0: 10 Stations	0: None	1: 1/4" FPT connection	CGA DIN 477 BS 341 and others available
52C Chrome-plated brass	2: Standard double row (right or left) (two cylinders/station)	1: 1 Station	2: 24" flexible 316 stainless steel with check valve	2: Cylinder connection adapter	
52S Stainless steel	3: Standard single duplex (right and left) (one cylinder/station)	2: 2 Stations	3: 36" flexible 316 stainless steel with check valve		
	4: Compact single row (right or left) (One cylinder/station)	3: 3 Stations	6: 72" flexible 316 stainless steel with check valve		
	5: Compact double row (right or left) (two cylinders/station)	4: 4 Stations			
	6: Compact single duplex (right and left) (one cylinder/station)	5: 5 Stations			
		6: 6 Stations			
		7: 7 Stations			
		8: 8 Stations			
		9: 9 Stations			
		A: 11 stations			
		B: 12 stations			
		C: 13 stations			
		D: 14 stations			
		E: 15 stations			