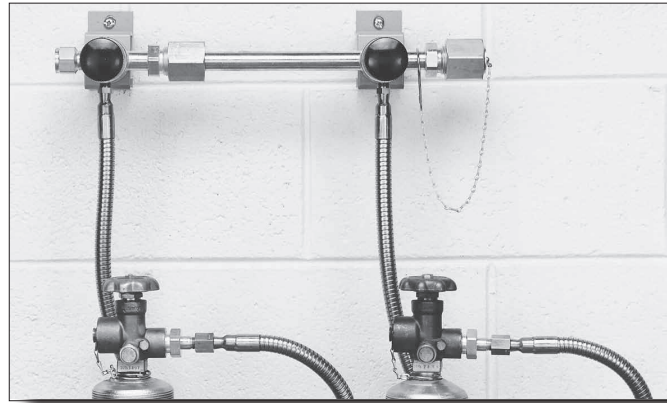


# MANIFOLDS



## 628 SERIES MANIFLEX HF

The 628 Series Maniflex Modular Gas Distribution System is a flexible, modular system designed for centralized gas distribution, regardless of facility constraints. The modules contained in the header are available in standard, compact, or double-row versions, allowing many combinations which will adapt to any physical environment. For Acetylene, hoses with integral flashback arrestors are available to conform to OSHA requirements for manifolds. For other fuel gases, arrestors are required downstream to conform to OSHA requirements for manifolds.



Features	Materials	Specifications
<b>Modular Design</b> Flexible field installation	<b>Starter Block</b> Brass barstock	<b>Maximum Inlet Pressure</b> 3000 PSIG (210 BAR)
<b>Integral Diaphragm Valves</b> Leak-tight integrity, no gas contamination	<b>Diaphragm Valve</b> Body Brass barstock Seat PCTFE Stems 316L stainless steel Diaphragms Stainless steel	<b>Temperature Range</b> -40°F to 140°F (-40°C to 60°C)
<b>Brass or Chrome-Plated Brass</b> No possibility of gas contamination	<b>Hose Core</b> Stainless steel PTFE Rigid copper Rigid brass	<b>Inlet Connections</b> 1/4" FNPT
<b>Metal to Metal Field-Assembled Joints</b> Easy leak tight field assembly, ease of transportation	<b>Hose Fittings</b> Brass	<b>Outlet Connections</b> 1/2" FNPT
<b>Silver-Brazed Modules</b> Contamination-free installation	<b>Hose Casing</b> Armored stainless steel Stainless steel braid	<b>Header</b> 0.875 OD x 0.188 wall (Brass)

CRN 0H15806.5

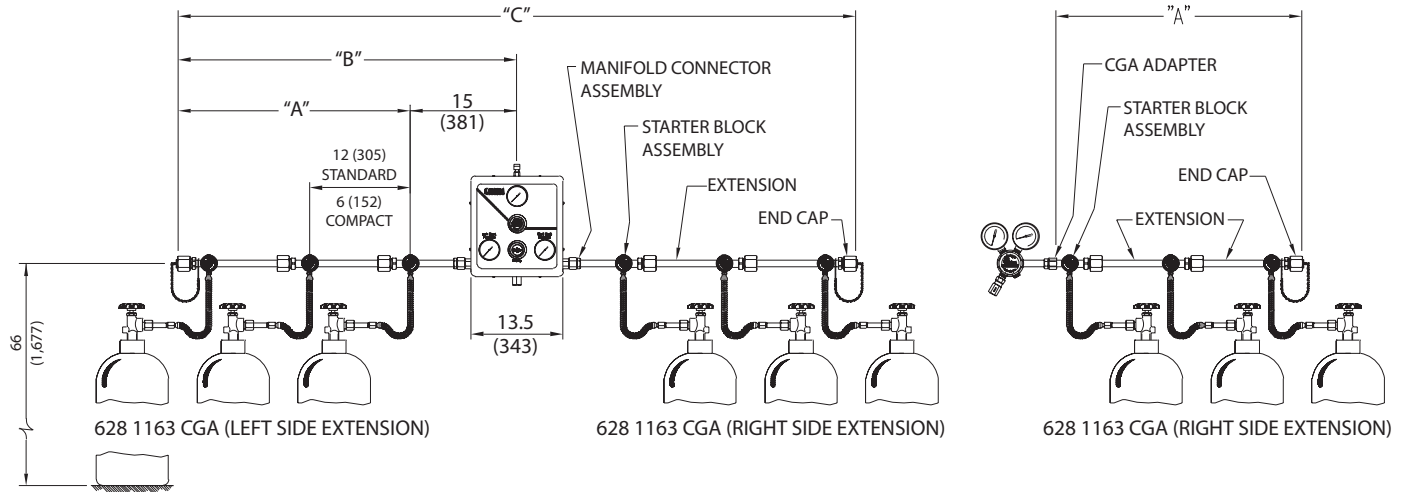
### Dimensions ("A", "B", and "C" refer to the lengths specified on following page)

Cylinders Per Extension	1	2	3	4	5	6	7	8	9	10
"A" Standard (Single Row)	6"	18"	30"	42"	54"	66"	78"	90"	102"	114"
"B" Standard (Single Row)	15"	27"	39"	51"	63"	75"	87"	99"	111"	123"
"C" Standard (Single Row)	30"	54"	78"	102"	126"	150"	174"	198"	222"	246"
Weight Standard (Single Row)	5.7 lbs	11.8 lbs	17.9 lbs	24.0 lbs	31.1 lbs	36.2 lbs	42.3 lbs	48.4 lbs	54.5 lbs	60.6 lbs
"A" Compact (Single Row)	6"	12"	18"	24"	30"	36"	42"	48"	54"	60"
"B" Compact (Single Row)	15"	21"	27"	33"	39"	45"	51"	57"	63"	69"
"C" Compact (Single Row)	30"	42"	54"	66"	78"	90"	102"	114"	126"	138"
Weight Compact (Single Row)	5.7 lbs	11.2 lbs	16.7 lbs	22.2 lbs	27.7 lbs	33.2 lbs	38.7 lbs	44.2 lbs	49.7 lbs	55.2 lbs

# MANIFOLDS



## System Diagram



DISTRIBUTION SYSTEMS

## Ordering Information

Series	Material	Orientation	Hose Style	Number of Stations	-Cylinder Connection	Options
628	1: Brass	1: Standard Single Row	0: None	1: One Station	Please specify inlet connection	F: Integral Hose Flash Arrestor
		3: Standard Double Row	2: 24" Rigid Copper	2: Two Stations		
		4: Compact Single Row	3: 72" Flexible Stainless Steel Core and Armor Cased	3: Three Stations		
		6: Compact Double Row	4: 24" Flexible Stainless Steel Braided with PTFE Core	4: Four Stations		
			5: 36" Flexible Stainless Steel Core and Armor Cased	5: Five Stations		
			6: 36" Flexible Stainless Steel Braided with PTFE Core	6: Six Stations		
			7: 24" Flexible Stainless Steel Core and Armor Cased	7: Seven Stations		
			8: 36" Rigid Brass with Flash Arrestor (CGA 300 and 510 Acetylene)	8: Eight Stations		
			9: 72" Flexible Stainless Steel Braided with PTFE Core	9: Nine Stations		
			A: 36" Flexible Stainless Steel Armor with PTFE Core	0: Ten Stations		
				A: Eleven Stations		
				B: Twelve Stations		
				C: Thirteen Stations		
				D: Fourteen Stations		
				E: Fifteen Stations		

## Maniflex Options

Part Number	Option	Description
830 7437	Manifold Floor Stand	Supports two standard length (12") manifold extensions installed consecutively
529 0008 CGA	CGA Adapter for Regulators	Brass (1/2" MNPT x CGA cylinder connection outlet)
801 7011 801 7015	Flashback Arrestors	Ensure safe pipeline design per OSHA and NFPA 51 requirements
829 9998	12" Extension Kit	Mounting hardware with brass valve
829 9997	Starter Kit	Mounting hardware with brass valve
829 9999	6" Extension Kit	Mounting hardware with brass valve
829 1830	End Cap	End cap with chain