



## 628 Series Maniflex HF

The 628 Series Maniflex Modular Gas Distribution System is a flexible modular system designed for centralized gas distribution regardless of facility constraints. The modules contained in the header are available in standard, compact, or double-row versions, allowing many combinations which will adapt to any physical environment. Optional flashback arrestors are available for each hose to safely deliver fuel gas to a CONCOA pressure control device.



628-1202-000 shown

### Advanced Features

- **Modular Design**  
Flexible field installation
- **Integral Diaphragm Valves**  
Leak-tight integrity  
No gas contamination
- **Brass**  
No possibility of gas contamination
- **Metal to Metal Field-Assembled Joints**  
Easy leak-tight field assembly  
Ease of transportation
- **Silver-Brazed Modules**  
Contamination-free installation

Ask About Our

**EXTENDED**  
WARRANTY

On This CONCOA Product

### Specifications

**Maximum Inlet Pressure**  
3,000 PSIG (210 BAR)

**Temperature Range**  
-40°F to 140°F (-40°C to 60°C)

**Inlet Connections**  
1/4" FPT

**Outlet Connections**  
1/2" FPT

**Header**  
0.875 OD x 0.125 wall (Brass)

**Diaphragm Valve**  
Brass barstock (Body)  
PCTFE (Seat)  
316 stainless steel (Stems)  
316 stainless steel (Diaphragms)

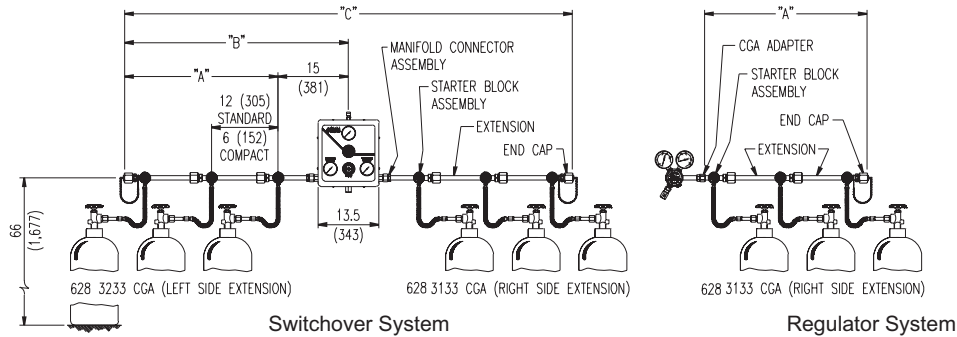
### How to Order a Maniflex System

The Maniflex manifold systems are used either as a system with a regulator or as a part of a switchover system. Both options are depicted on page 25. Please note that switchover matrices already include Maniflex systems.

- Step One** Choose a material from those available in column A.
- Step Two** Select an orientation from those available in column B. Standard manifold headers space cylinders 12" apart; compact manifold headers space cylinders 6" apart. "Right" means that the extension connects to the right inlet side of a regulator or switchover. A single row manifold has one cylinder pigtail attached at each valve station; a double row manifold has two cylinder pigtails attached at each valve station.
- Step Three** Choose a pigtail style from those available in column C. Please note that all pigtails, except those with flashback arrestors, include an integral check valve in the inlet connection.
- Step Four** Determine the number of cylinders that will be used with the extension.
- Step Five** Specify the connection type for the pigtails. Flammable and fuel gas connections are only available on pigtails with integral flashback arrestors.
- Step Six** To connect the outlet of the manifold system to a regulator, order the appropriate optional CGA adapter from the accessories listed on page 25.

## Dimensions (“A”, “B”, and “C” refer to the lengths specified on the diagram below.)

Cylinders per Extension	1	2	3	4	5	6	7	8	9	10
“A” Standard (Single Row)	6”	18”	30”	42”	54”	66”	78”	90”	102”	114”
“B” Standard (Single Row)	15”	27”	39”	51”	63”	75”	87”	99”	111”	123”
“C” Standard (Single Row)	30”	54”	78”	102”	126”	150”	174”	198”	222”	246”
Weight Standard (Single Row)	5.7 lbs	11.8 lbs	17.9 lbs	24.0 lbs	31.1 lbs	36.2 lbs	42.3 lbs	48.4 lbs	54.5 lbs	60.6 lbs
“A” Compact (Single Row)	6”	12”	18”	24”	30”	36”	42”	48”	54”	60”
“B” Compact (Single Row)	15”	21”	27”	33”	39”	45”	51”	57”	63”	69”
“C” Compact (Single Row)	30”	42”	54”	66”	78”	90”	102”	114”	126”	138”
Weight Compact (Single Row)	5.7 lbs	11.2 lbs	16.7 lbs	22.2 lbs	27.7 lbs	33.2 lbs	38.7 lbs	44.2 lbs	49.7 lbs	55.2 lbs



## Ordering Information

628	A	B	C	D	Inlet	Options
Series 628	Material	Orientation	Pigtail Style	Number of Stations	Pigtail Connection	Installed Options
	1: Brass	1: Standard Single Row (right)	0: None	1: One Station	Please specify inlet connection PTFE-lined pigtails for oxygen service include accumulator extensions to prevent ignition from adiabatic compression. Not for use w/ Helium or Hydrogen.	F: Integral Pigtail Flash Arrestor
		2: Standard Single Row (left)	1: 3/6" Rigid Brass	2: Two Stations		
		3: Standard Double Row	2: 24" Rigid Copper	3: Three Stations		
		4: Compact Single Row (right)	3: 72" Flexible Stainless Steel Core & Armor Cased	4: Four Stations		
		5: Compact Single Row (left)	4: 24" Flexible Stainless Steel-braided w/ PTFE lining	5: Five Stations		
		6: Compact Double Row	5: 36" Flexible Stainless Steel Core & Armor Cased	6: Six Stations		
			6: 36" Flexible Stainless Steel-braided w/ PTFE lining	7: Seven Stations		
			7: 24" Flexible Stainless Steel Core & Armor Cased	8: Eight Stations		
			8: 36" Rigid Brass w/ Flash Arrestor (CGA 300 & 510 Acet. only)	9: Nine Stations		
			9: 72" Flexible Stainless Steel-braided w/ PTFE lining	0: Ten Stations		
			A: 36" Flexible Stainless Steel Armor w/ PTFE lining	A: Eleven Stations		
				B: Twelve Stations		
				C: Thirteen Stations		
				D: Fourteen Stations		
				E: Fifteen Stations		

## Maniflex Accessories

Option	Order No.	Description
Manifold Floor Stand	830-7437	Supports two standard length (12") manifold extensions installed consecutively
CGA Adapter for Regulator	529-0008-CGA	Brass (1/2" MPT x CGA)
1/2" Union Joint Connector	829-1839	Union Gland
	829-1840	Union Nut
	830-6498	Union Connector
12" Extension Kit	829-9998	628 Series brass 12" extension kit
6" Extension Kit	829-9999	628 Series brass 6" extension kit
Starter Block	829-9997	628 Series brass starter block kit