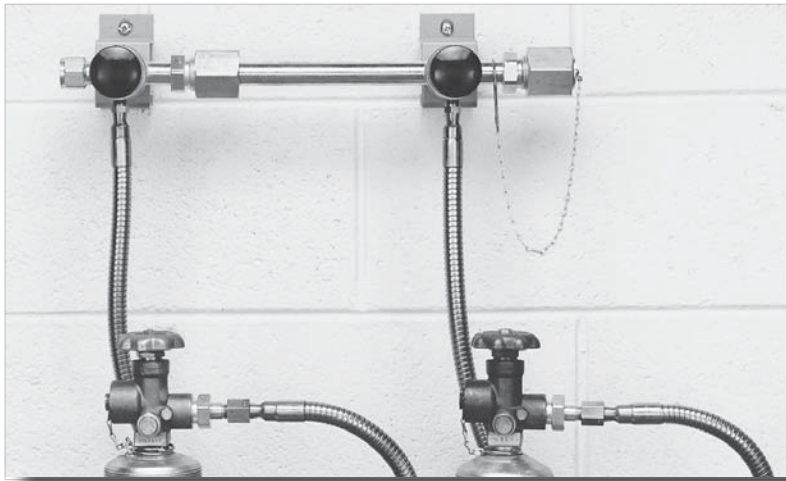


# 628 Series Maniflex HF

## Manual Modular Manifold High Flow



The 628 Series Maniflex Modular Gas Distribution System is a flexible modular system designed for centralized gas distribution, regardless of facility constraints. The modules contained in the header are available in standard, compact, or double-row versions, allowing many combinations which will adapt to any physical environment. For acetylene, pigtails with integral flashback arrestors are available to conform to OSHA requirements for manifolds. For other fuel gases, arrestors are required downstream to conform to OSHA requirements for manifolds.

### Advanced Features

- Modular Design - Flexible field installation
- Integral Diaphragm Valves - Leak-tight integrity, no gas contamination
- Brass or Chrome-Plated Brass - No possibility of gas contamination
- Metal to Metal Field-Assembled Joints - Easy leak-tight field assembly, ease of transportation
- Silver-Brazed Modules - Contamination-free installation

### Specifications

- Maximum Inlet Pressure 3000 PSIG (210 BAR)
- Temperature Range -40°F to 140°F (-40°C to 60°C)
- Inlet Connections ¼" FPT
- Outlet Connections ½" FPT
- Header 0.875 OD x 0.125 wall (Brass)
- Diaphragm Valve
  - Brass barstock (Body)
  - PCTFE (Seat)
  - 316 stainless steel (Stems)
  - Elgiloy (Diaphragms)

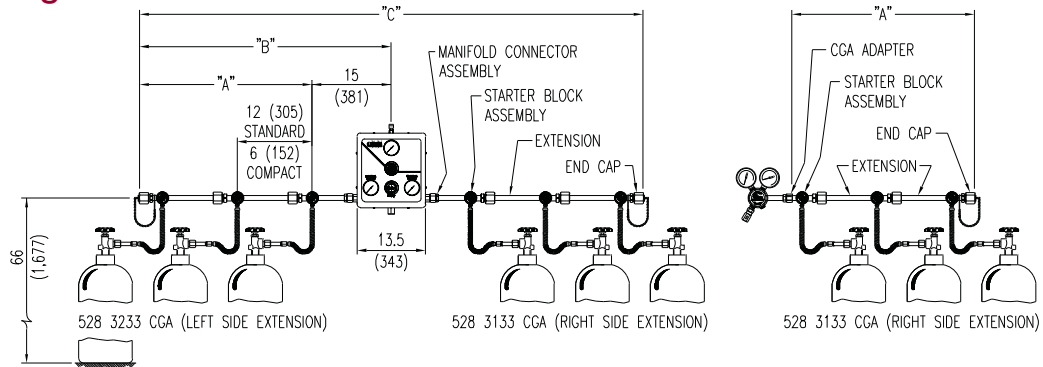
### Dimensions ("A", "B", and "C" refer to the lengths specified on following page.)

Cylinders Per Extension	1	2	3	4	5	6	7	8	9	10
"A" Standard (Single Row)	6"	18"	30"	42"	54"	66"	78"	90"	102"	114"
"B" Standard (Single Row)	15"	27"	39"	51"	63"	75"	87"	99"	111"	123"
"C" Standard (Single Row)	30"	54"	78"	102"	126"	150"	174"	198"	222"	246"
Weight Standard (Single Row)	5.7 lbs	11.8 lbs	17.9 lbs	24.0 lbs	31.1 lbs	36.2 lbs	42.3 lbs	48.4 lbs	54.5 lbs	60.6 lbs
"A" Compact (Single Row)	6"	12"	18"	24"	30"	36"	42"	48"	54"	60"
"B" Compact (Single Row)	15"	21"	27"	33"	39"	45"	51"	57"	63"	69"
"C" Compact (Single Row)	30"	42"	54"	66"	78"	90"	102"	114"	126"	138"
Weight Compact (Single Row)	5.7 lbs	11.2 lbs	16.7 lbs	22.2 lbs	27.7 lbs	33.2 lbs	38.7 lbs	44.2 lbs	49.7 lbs	55.2 lbs

# MANIFOLDS

**CONCOA**  
PRECISION GAS CONTROLS

## System Diagram



## Ordering Information

628	A	B	C	D	Inlet	Options
Series	Material	Orientation	Pigtail Style	Number of Stations	Pigtail Connection	Installed Options
628	1: Brass	1: Standard Single Row (right)	0: None	1: One Station	Please specify inlet connection	F: Integral Pigtail Flash Arrestor
		2: Standard Single Row (left)	1: 3/6" Rigid Brass	2: Two Stations		
		3: Standard Double Row	2: 24" Rigid Copper	3: Three Stations		
		4: Compact Single Row (right)	3: 72" Flexible Stainless Steel Core and Armor Cased	4: Four Stations		
		5: Compact Single Row (left)	4: 24" Flexible Stainless Steel-braided with PTFE lining	5: Five Stations		
		6: Compact Double Row	5: 36" Flexible Stainless Steel Core and Armor Cased	6: Six Stations		
			6: 36" Flexible Stainless Steel-braided with PTFE lining	7: Seven Stations		
			7: 24" Flexible Stainless Steel Core and Armor Cased	8: Eight Stations		
			8: 36" Rigid Brass with Flash Arrestor (CGA 300 and 510 Acetylene)	9: Nine Stations		
			9: 72" Flexible Stainless Steel-braided with PTFE lining	0: Ten Stations		
			A: 36" Flexible Stainless Steel Armor with PTFE lining	A: Eleven Stations		
				B: Twelve Stations		
				C: Thirteen Stations		
				D: Fourteen Stations		
				E: Fifteen Stations		

## Maniflex Options

Option	Order Number	Description
Manifold Floor Stand	830-7437	Supports 2 standard length (12") manifold extensions installed consecutively
CGA Adapter for Regulators	529-0008-CGA	Brass (1/2" MPT x CGA)
Flashback Arrestors	801-8530	Use of Acetylene requires flashback arrestors and pigtails. Meets OSHA and NFPA Std. 51 requirements and complies with ISO 5175 (heavy class) DIN 8521, and BS 6158. See Page 44.
12" Extension Kit	829-9998	Brass mounting hardware with valve
Starter Kit	829-9997	Brass mounting hardware with valve
6" Extension Kit	829-9999	Brass mounting hardware with valve
End Cap	829-1830	End cap with chain

CONCOA • 1501 Harpers Road, Virginia Beach, Virginia 23454 USA  
800.225.0473 • www.CONCOA.com