



ADI 3100
Stock Nos. 1805 0728
0729

700 SERIES DUAL FLOWMETERS

INSTRUCTIONS and PARTS

BEFORE INSTALLING, OPERATING OR SERVICING, READ AND COMPLY WITH THESE INSTRUCTIONS

AUGUST 1995
NEW ISSUE

USER RESPONSIBILITY

This equipment will perform in conformity with the description thereof contained in this manual and accompanying labels and/or inserts when installed, operated, maintained and repaired in accordance with the instructions provided. This equipment must be checked periodically. Defective equipment should not be used. Parts that are broken, missing, plainly worn, distorted or contaminated, should be replaced immediately. Should such repair or replacement become necessary, it is recommended that a telephonic or written request for service advice be made to the Authorized Distributor from whom the equipment was purchased.

This equipment or any of its parts should not be altered without the prior written approval of Controls Corporation of America (CONCOA). The user of this equipment shall have the sole responsibility to any malfunction which results from improper use, faulty maintenance, damage, improper repair or alteration by anyone other than Controls Corporation of America (CONCOA) or a service facility designated by Controls Corporation of America (CONCOA).

SAFETY

Use these flowmeters only with the gases for which they are intended, and only at the pressures for which they are designed. Be sure that all connections and the flowmeter, in general are clean. Remove dirt or grease from the flowmeter and surrounding parts with a clean, lint-free rag. Periodically check for leaks.

I. INTRODUCTION

Concoa Series 700 Dual Flowmeters are designed to operate at a fixed pressure of 30 psi. They are specifically intended for applications requiring frequent changes in gas flow, and are engineered for accuracy, dependability and ruggedness.

II. INSTALLATION

Connect the flowmeter to a pipeline or fixed pressure regulator delivering 30 psig. Connect a hose between the flowmeter outlet and the equipment.

III. OPERATION

Open the gas supply valve completely. Turn the needle valve on the flowmeter until the center of the ball float indicates the required flow for the specific application. Check for leaks.

IV. SERVICE

Repairs should be made by an authorized Concoa service facility.

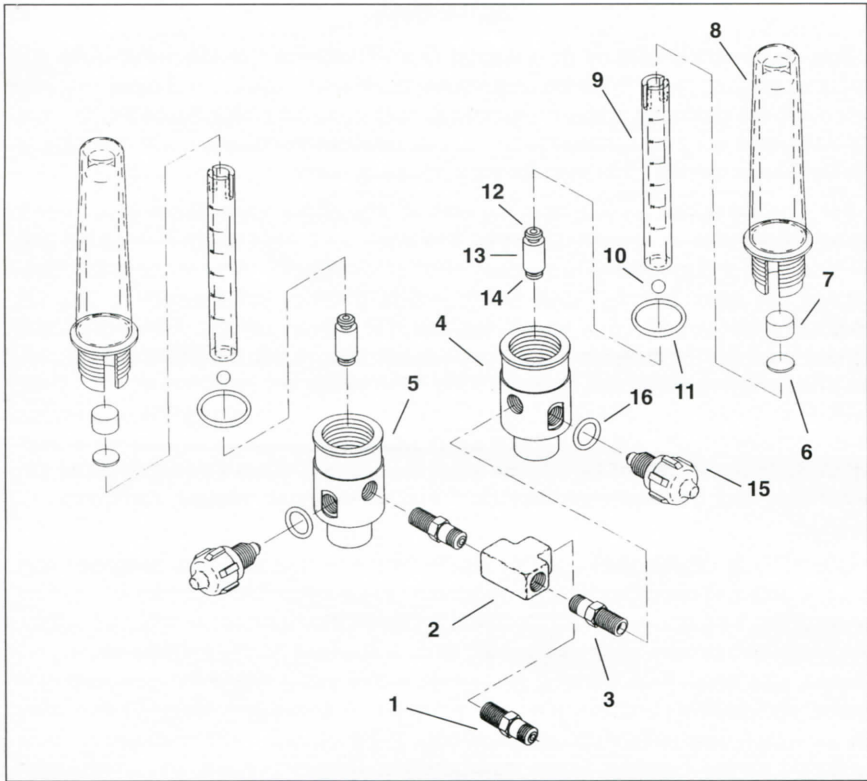
V. PARTS

The following illustration of the equipment identifies each part by stock number, description, and quantity used if more than one

ORDERING

To assure proper operation, use only genuine CONCOA parts and products with this equipment. To order replacement parts:

- a. Give the stock number, part description, and quantity of each part required.
- b. Give stock number and description of equipment in which the parts are to be used.
- c. Indicate any special shipping instructions.



700 SERIES DUAL FLOWMETERS

Item No.	Description	1805 0727 Ar - CO ₂	1805 0728 Ar - He
1	Nipple 1/8 x 1/4 NPT	830 4400	830 4400
2	Tee 1/8 NPT	830 5353	830 5353
3	Nipple 1/8 NPT (2)	830 5352	830 5352
4	Body Flowmeter R.H.	801 4447	801 4447
5	Body Flowmeter L.H.	801 4449	801 4449
6	Disc Teflon (2)	801 0717	801 0717
7	Bumper (2)	801 4410	801 4410
8	Casing (2)	801 4405	801 4405
9	Flow Tube (2)	801 4407	801 4408
10	Ball 1/4" S.S. (2)	830 0162	830 0162
11	'O' Ring (2)	801 4404	801 4404
12	'O' Ring (2)	831 4074	831 4074
13	Holder, Tube (2)	801 4417	801 4417
14	'O' Ring (2)	831 7758	831 7758
15	Valve Stem Includes 16 (2)	831 4449	831 4449
16	'O' Ring (2)	831 4075	831 4075

Numbers in () indicate quantity if more than one.

WARRANTY

This equipment is sold by CONTROLS CORPORATION OF AMERICA under the warranty set forth in the following paragraphs. Such warranties are extended only with respect to the purchase of this equipment directly from CONTROLS CORPORATION OF AMERICA or its Authorized Distributors as new merchandise and are extended to the first Buyer thereof other than for the purpose of resale.

For a period of one (1) year from the date of original delivery to Buyer or to Buyers order, this equipment is warranted to be free from functional defects in materials and workmanship and to conform to the description of this equipment contained in this manual and any accompanying labels and/or inserts, provided that the same is properly operated under conditions of normal use and that regular periodic maintenance and service is performed or replacements made in accordance with the instructions provided. The foregoing warranties shall not apply if the equipment has been repaired other than by CONTROLS CORPORATION OF AMERICA, or a designated service facility, or in accordance with written instructions provided by CONTROLS CORPORATION OF AMERICA, or altered by anyone other than CONTROLS CORPORATION OF AMERICA, or if the equipment has been subject to abuse, misuse, negligence, or accident.

CONTROLS CORPORATION OF AMERICA's sole and exclusive obligation and Buyer's sole and exclusive remedy under the above warranties is limited to repairing or replacing, free of charge, at CONTROLS CORPORATION OF AMERICA's option, the equipment or part, which is reported to its Authorized Distributor from whom purchased, and which if so advised, is returned with a statement of the observed deficiency, and proof of purchase of equipment or part not later than seven (7) days after the expiration date of the applicable warranty, to the nearest designated service facility during normal business hours, transportation charges prepaid, and which, upon examination, is found not to comply with the above warranties. Return trip transportation charges for the equipment or part shall be paid by the buyer.

CONTROLS CORPORATION OF AMERICA SHALL NOT BE OTHERWISE LIABLE FOR ANY DAMAGES INCLUDING BUT NOT LIMITED TO INCIDENTAL DAMAGES, CONSEQUENTIAL DAMAGES, OR SPECIAL DAMAGES, WHETHER SUCH DAMAGES RESULT FROM NEGLIGENCE, BREACH OF WARRANTY OR OTHERWISE.

THERE ARE NOT EXPRESS OR IMPLIED WARRANTIES WHICH EXTEND BEYOND THE WARRANTIES HEREIN ABOVE SET FORTH. CONTROLS CORPORATION OF AMERICA MAKES NO WARRANTY OF MERCHANTABILITY OR FITNESS FOR A PARTICULAR PURPOSE WITH RESPECT TO THE EQUIPMENT OR PARTS THEREOF.

CONTROLS CORPORATION OF AMERICA
1501 Harpers Road • Virginia Beach, Virginia 23454 USA
1.800.225.0473 • Fax: 757.422.3125
www.CONCOA.com