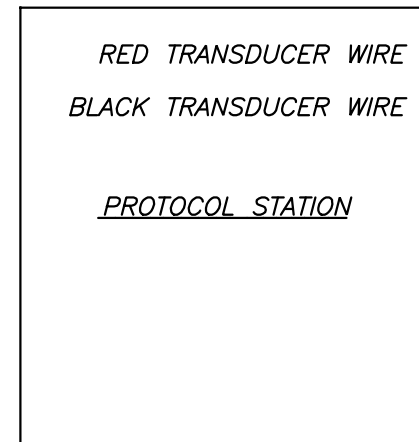


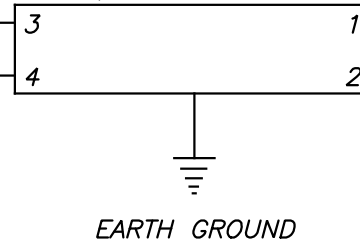
SCHEMATIC FOR PROTOCOL STATION REGULATOR WITH TRANSDUCER

POTENTIALLY FLAMMABLE ATMOSPHERE



INTRINSICALLY SAFE WIRING
INTRINSICALLY SAFE WIRING

CONCOA BARRIERS
#529 5361
STAHL BARRIER
9002/13-280-093-001



* WIRE "1"
* WIRE "2"

"XDCR A" "+" (Channel 1)
-or-
"XDCR B" "+" (Channel 2)
Use "-" Terminal to Match
Wire 1 Option

ALTOS 2 ALARM
5750025-01-24V

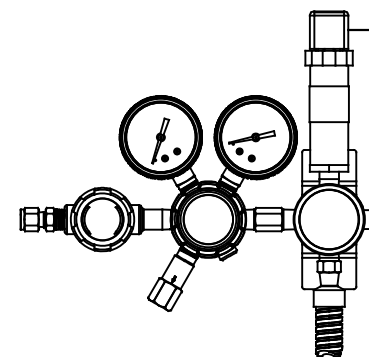


HAZARDOUS LOCATION
CLASS I, II, & III - A THRU G

SAFE LOCATION

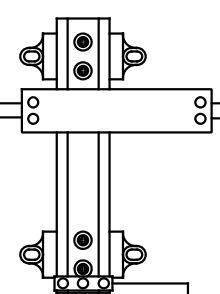
* SEE ALSO WIRING INSTRUCTIONS IN CONCOA DOCUMENT
99060025-24V (ADI0025-24V)

VISUAL REPRESENTATION



INTRINSICALLY SAFE WIRING

(1) BARRIER



ALTOS 2
ALARM
UNIT

NOTES ON SYSTEM

1. SYSTEM MUST BE INSTALLED IN ACCORDANCE WITH NATIONAL ELECTRIC CODE ANSI/NFPA 70, ARTICLE 504. BARRIERS MUST BE INSTALLED IN ACCORDANCE WITH MANUFACTURER GUIDELINES.
2. MAXIMUM CABLE LENGTH TO BE 500 FT. (152 METERS).

NOTES ON CONTROL EQUIPMENT:

1. MAINS POWER MUST NOT EXCEED 250 VOLTS WITH RESPECT TO GROUND.
2. CONNECT TO EARTH GROUND ACCORDING TO BARRIER MANUFACTURER'S INSTRUCTIONS. RESISTANCE BETWEEN BARRIER GROUND AND GROUNDING ELECTRODE SHALL NOT EXCEED 1 OHM.

CONTACT INFORMATION, BARRIERS: R. STAHL (U.S.A.)
1-800-782 4357
www.rstahl.com

CONCOA	CONTROLS CORPORATION OF AMERICA PRODUCT ENGINEERING DEPARTMENT VIRGINIA BEACH, VA 23454	
	TITLE: ADI, _INTRIN_SAFETY__ 4-20mA_ONE_CHANNEL	

PART NO. 9906 3243	
FILENAME: 99063243.PDF	
REV.	ECN NUMBER
1	22-016
DATE 2/15/2022	