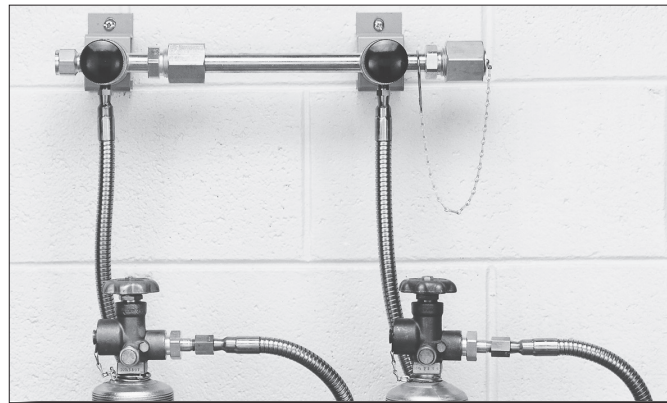


MANIFOLDS



628 SERIES MANIFLEX HF

The 628 Series Maniflex Modular Gas Distribution System is a flexible, modular system designed for centralized gas distribution, regardless of facility constraints. The modules contained in the header are available in standard, compact, or double-row versions, allowing many combinations which will adapt to any physical environment. For Acetylene, hoses with integral flashback arrestors are available to conform to OSHA requirements for manifolds. For other fuel gases, arrestors are required downstream to conform to OSHA requirements for manifolds.



Features	Materials	Specifications
Modular Design Flexible field installation	Starter Block Brass barstock	Maximum Inlet Pressure 3000 PSIG (210 BAR)
Integral Diaphragm Valves Leak-tight integrity, no gas contamination	Diaphragm Valve Body Brass barstock Seat PCTFE Stems 316L stainless steel Diaphragms Stainless steel	Temperature Range -40°F to 140°F (-40°C to 60°C)
Brass Barstock No possibility of gas contamination	Hose Core Stainless steel PTFE Rigid copper	Inlet Connections 1/4" FNPT
Metal to Metal Field-Assembled Joints Easy leak tight field assembly, ease of transportation	Hose Fittings Brass	Outlet Connections 1/2" FNPT
Silver-Brazed Modules Contamination-free installation	Hose Casing Armored stainless steel Stainless steel braid	Header 0.875 OD x 0.188 wall (Brass)

CRN 0H15806.5

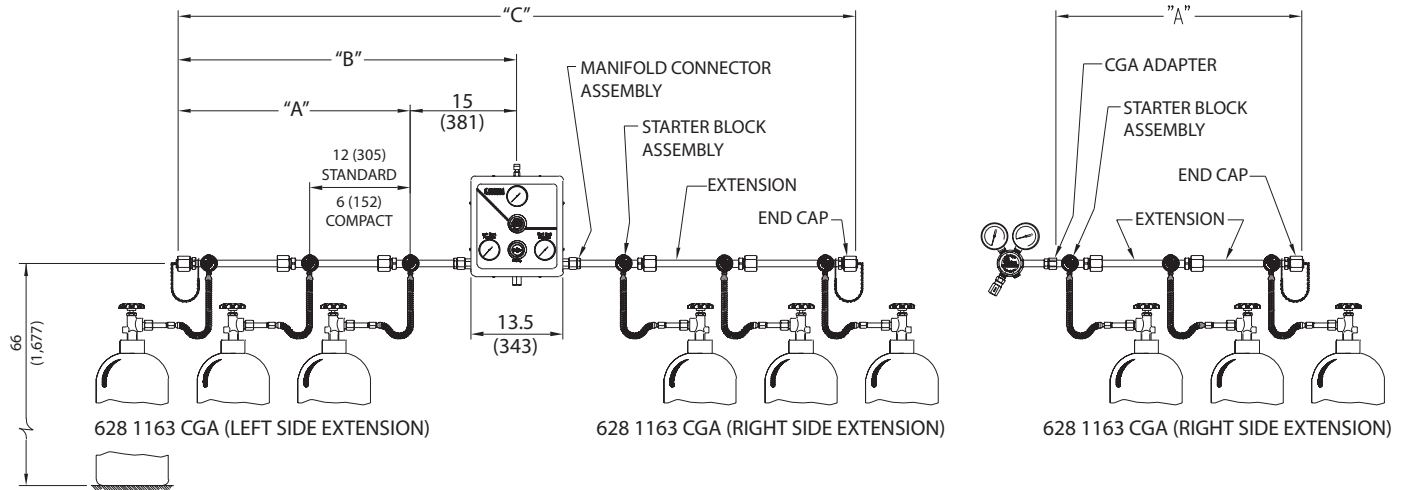
Dimensions ("A", "B", and "C" refer to the lengths specified on following page)

Cylinders Per Extension	1	2	3	4	5	6	7	8	9	10
"A" Standard (Single Row)	6"	18"	30"	42"	54"	66"	78"	90"	102"	114"
"B" Standard (Single Row)	15"	27"	39"	51"	63"	75"	87"	99"	111"	123"
"C" Standard (Single Row)	30"	54"	78"	102"	126"	150"	174"	198"	222"	246"
Weight Standard (Single Row)	5.7 lbs	11.8 lbs	17.9 lbs	24.0 lbs	31.1 lbs	36.2 lbs	42.3 lbs	48.4 lbs	54.5 lbs	60.6 lbs
"A" Compact (Single Row)	6"	12"	18"	24"	30"	36"	42"	48"	54"	60"
"B" Compact (Single Row)	15"	21"	27"	33"	39"	45"	51"	57"	63"	69"
"C" Compact (Single Row)	30"	42"	54"	66"	78"	90"	102"	114"	126"	138"
Weight Compact (Single Row)	5.7 lbs	11.2 lbs	16.7 lbs	22.2 lbs	27.7 lbs	33.2 lbs	38.7 lbs	44.2 lbs	49.7 lbs	55.2 lbs

MANIFOLDS



System Diagram



DISTRIBUTION SYSTEMS

Ordering Information

Series	Material	Orientation	Hose Style	Number of Stations	-Cylinder Connection	Options
628	1: Brass	1: Standard Single Row	0: No Hoses	1: One Station	Please specify inlet connection To prevent adiabatic ignition PTFE core hoses for Oxygen service include distance volume pieces and stainless steel core hoses are Monel core. PTFE-lined hoses not for use with Helium or Hydrogen.	F: Integral hose Flash Arrestor Acetylene requires Flashback Arrestors on hoses.
		3: Standard Double Row	2: 24" Rigid Copper (Not for use with Acetylene CGA 300 & 510)	2: Two Stations		
		4: Compact Single Row	3: 72" Flexible Stainless Steel Core and Armor Cased	3: Three Stations		
		6: Compact Double Row	4: 24" Flexible Stainless Steel Braided with PTFE Core	4: Four Stations		
			5: 36" Flexible Stainless Steel Core and Armor Cased	5: Five Stations		
			6: 36" Flexible Stainless Steel Braided with PTFE Core	6: Six Stations		
			7: 24" Flexible Stainless Steel Core and Armor Cased	7: Seven Stations		
			9: 72" Flexible Stainless Steel Braided with PTFE Core	8: Eight Stations		
			A: 36" Flexible Stainless Steel Armor with PTFE Core	9: Nine Stations		
				0: Ten Stations		
				A: Eleven Stations		
				B: Twelve Stations		
				C: Thirteen Stations		
				D: Fourteen Stations		
				E: Fifteen Stations		

Related Options

Part Number	Option	Description
830 7437	Manifold Floor Stand	Supports two standard length (12") manifold extensions installed consecutively
529 0008 CGA	CGA Adapter for Regulators	Brass (1/2" MNPT x CGA cylinder connection outlet)
801 7011 801 7015	Fuel Gas Flashback Arrestors	Use of Acetylene requires flashback arrestors on hoses. Meets OSHA and NFPA 51 requirements and complies with ISO 51 with ISO 5175 (heavy class) DIN 8521, and BS 6158 (See page 54)
801 7012 801 7016	Oxygen Flashback Arrestors	Use of Acetylene requires flashback arrestors on hoses. Meets OSHA and NFPA 51 requirements and complies with ISO 51 with ISO 5175 (heavy class) DIN 8521, and BS 6158 (See page 54)
829 9998	12" Extension Kit	Mounting hardware with brass valve
829 9997	Starter Kit	Mounting hardware with brass valve
829 9999	6" Extension Kit	Mounting hardware with brass valve