

# 620 SERIES Resonator Gas Supply

## 620 SERIES SWITCHOVER



The 620 Series Laser Gas Switchover is an automatic system designed to provide a continuous supply of laser purity gas. The system comes with either flexible hoses for use with two cylinders (one per side), or manifolds for two or more cylinders per side. The switchover requires final pressure regulation, which may be ordered integrally to the system, or separately for installation at the point of use.

### Advanced Features

- LASER QUALITY BRASS REGULATORS** Capsule® seat

---

- LASER QUALITY DIAPHRAGMANDSEALS** Limits possibility of contamination

---

- USER FRIENDLY PRIORITY VALVE** One knob switches cylinder priority

---

- INLET GLAND CHECK VALVES ON HOSE** Prevents contamination and backflow

6203008-01-000 shown

Applications	Materials	Specifications
<p><b>Laser Pure Resonator Gases</b> Helium Nitrogen Carbon Dioxide</p> <p><b>Laser Mixed Resonator Gases</b> Three gas premix Four gas premix Five gas premix</p>	<p><b>Bodies</b> Brass barstock</p> <p><b>Diaphragms</b> 316L stainless steel</p> <p><b>Seats</b> PTFE</p> <p><b>Filters</b> 10-micron sintered bronze</p> <p><b>Internal Seals</b> PTFE</p>	<p><b>Maximum Inlet Pressure</b> 3000 PSIG (210 BAR)</p> <p><b>Temperature Range</b> -40°F to 140°F (-40°C to 60°C)</p> <p><b>Gauges</b> 2" (50mm) diameter dual-scale brass</p> <p><b>Outlet Connection</b> ¼" stainless steel compression tube</p> <p><b>Helium Leak Integrity</b> 1 x 10<sup>-8</sup> scc/sec</p> <p><b>Cv</b> 0.2</p>

# Resonator

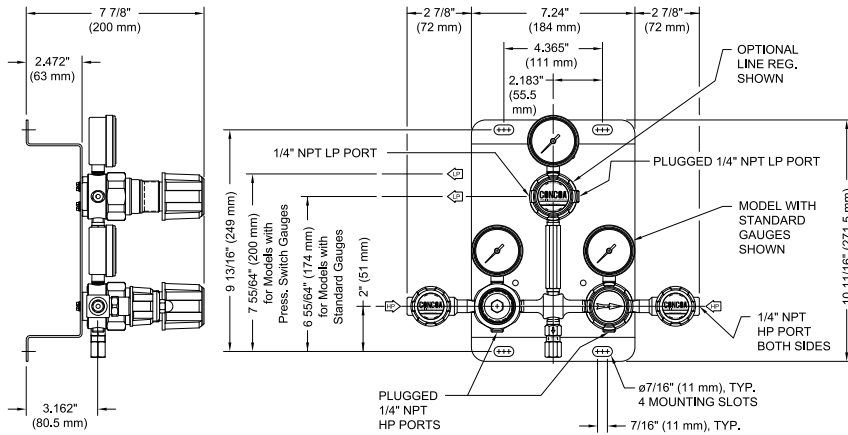
Gas Supply

# 620 SERIES

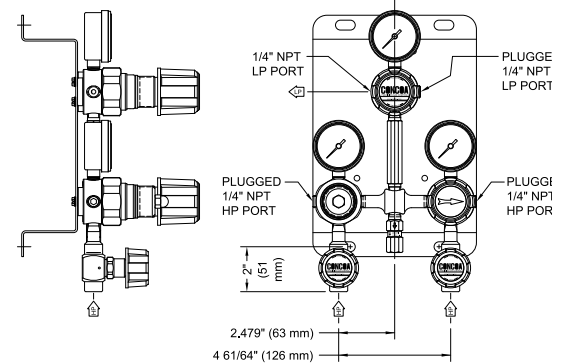
Resonator Gas Supply

## Installation Dimensions

Diaphragm Valves on Side Ports



Diaphragm Valves on Bottom Ports



## Ordering Information

620 Series	A	B	C	D	CON	Options
	Max Delivery Pressure	Inlet Connection	Cylinders Per Side	Assembly/Gauges	Inlet	Installed Options
620	2: 70 PSIG (5 BAR)	0: 1/4" FPT port	0: 1 cylinder (1/4" FPT inlet)	2: No line regulator (BAR/PSIG gauges) and no alarm capability	Please specify inlet connection	C: Compact manifolds
	3: 100 PSIG (7 BAR)	1: Manifold connector	1: 1 cylinder†	3: No line regulator (BAR/PSIG gauges) and with alarm capability	CGA DIN 477 BS 341 and others available	M: 6mm tube fitting outlet
	4: 200 PSIG (14 BAR)	2: Manifold connector with master valves*	2: 2 cylinders	7: Line regulator (BAR/PSIG gauges) and with alarm capability		N: Compact manifolds and 6mm tube fitting outlet
		3: Diaphragm valve (with 1/4" FPT port)	3: 3 cylinders	8: Line regulator (BAR/PSIG gauges) and no alarm capability		
		6: Tee purge & diaphragm valve (with 1/4" FPT port)	4: 4 cylinders			
		7: Tee purge & diaphragm valve (with manifold connector)	5: 5 cylinders			
			6: 6 cylinders			
			7: 7 cylinders			
			8: 8 cylinders			
			9: 9 cylinders			

\*Manifold connector required with multiple cylinders per side. Each manifold station includes a 36" (900mm) stainless steel-lined hose.

†Includes 36" (900mm) stainless steel-lined hoses if manifold connectors are not selected

## Available Options

Option	Part No.	Description
Advantium 8	5295310-01-001 (110 Volt) 5295311-01-001 (220 Volt)	Remote alarm provides power for indicator lights up to four 620 Switchovers, audible and visual alarm at remote unit, RS-232 computer interface, and supports optional telephone dialers.
Advantium 2	5750023 (110/220 Volt)	Remote alarm (universal input) provides audible remote alarm for a single 620 Switchover.
Vent Extension Kit	8299962	Four cylinder vent manifold extension block with mounting hardware
Manifold Floor Stand	8307437	Single manifold floor stand provides support for up to two consecutive manifold extensions
Floor Stand	8307439	AutoSwitch floor stand