

53 SERIES

Point-of-Use Panels

53S 5000 001 shown

The 53 Series Point-of-Use Panels provide a modular design to mount and locate 300 Series regulators at the point of use for high purity instrumentation or process gases. They are intended to provide final pressure control in gas distribution systems and are ideal for laboratory applications. The 53 Series are supplied with up to four high-purity regulators with rear entry inlet ports and diaphragm outlet valves. Five standard delivery pressure ranges can be individually selected for each regulator station 0-15 PSIG (0-1 BAR) to 0-200 PSIG (0-14 BAR).

Typical Applications

Bulk gas distribution systems

Gas and liquid chromatography

High purity carrier gases

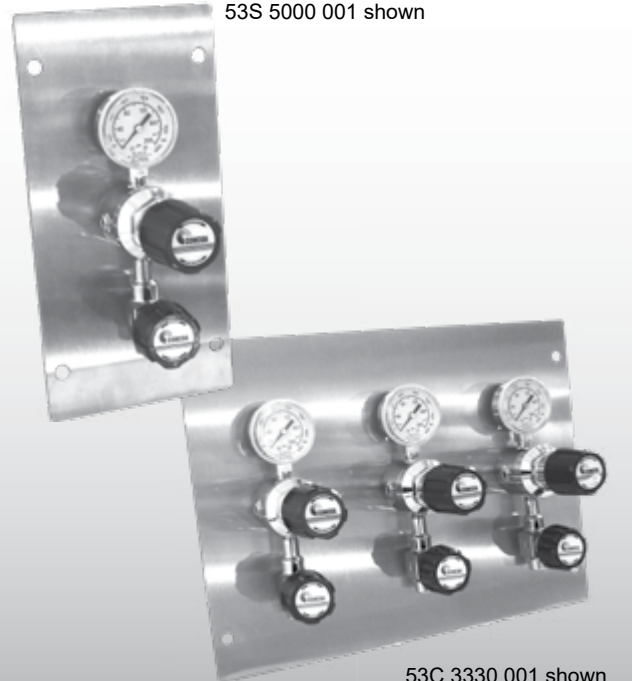
Zero, span, and calibration gases

High purity chamber pressurization

Liquefied hydrocarbon gas control

Control of cryogenic gases

EPA protocol standards



53C 3330 001 shown

Features

307 or 327 Series Regulators

High gas purity

Modular Design

Flexible installation

Rear Entry Regulator Inlet Ports

Piping behind panel

Five Individually Selectable Pressure Ranges

0-15 to 0-200 PSIG (0-1 to 0-14 BAR)

14 Gauge Stainless Steel Panel

Clean corrosion resistant installation

Stainless Steel Diaphragm

No inboard diffusion

High-Purity Diaphragm Outlet Valve

Gas flow control and positive shut-off

Materials

Regulator and Valve Body

316L stainless steel or
chrome-plated brass barstock

Bonnet

Chrome-plated brass barstock

Seats

PTFE on regulator
PCTFE on valve

Filter

Patented 10 micron 316 mesh or
sintered bronze

Diaphragm

316L stainless steel

Internal Seals

PTFE

Specifications

Maximum Inlet Pressure

3000 PSIG (210 BAR)

Operating Temp. Range

-40°F to 140°F (-40°C to 60°C)

Cv

0.1

Inlet/Outlet Connection

1/4" NPT female

Gauges

53C

Chrome-plated stem
Phosphor bronze tube
2" (53mm) brass case

53S

Stainless steel stem
Stainless steel tube
2" (53mm) stainless steel case

Panel

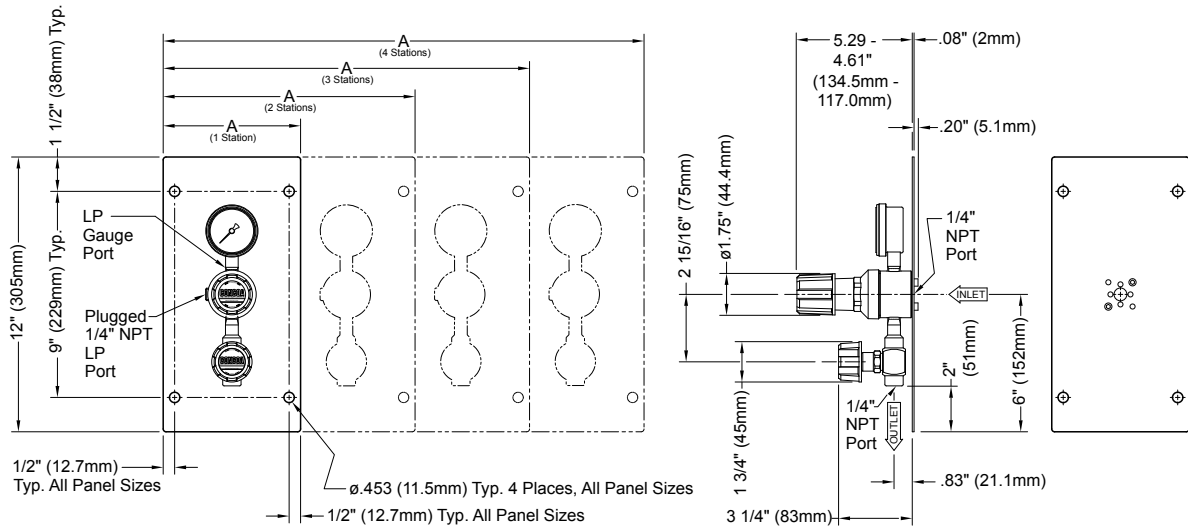
14-gauge 304 stainless steel

CRN 0H5216.5R1

Panels



Installation Dimensions



| Number of Stations | Length "Dim A" |
|--------------------|----------------|
| 1 | 6" (152.4mm) |
| 2 | 11" (279.4mm) |
| 3 | 16" (406.4mm) |
| 4 | 21" (533.4mm) |

Ordering Information

| 53 | Material | Station 1 | | Station 2 | | Station 3 | | Station 4 | |
|--------|--|------------------------------------|---------------------------|------------------------------------|---------------------------|------------------------------------|---------------------------|------------------------------------|---------------------------|
| Series | | Outlet Pressure | Outlet Gauge | Outlet Pressure | Outlet Gauge | Outlet Pressure | Outlet Gauge | Outlet Pressure | Outlet Gauge |
| 53 | C: Chrome-plated brass barstock 307 Series regulators | 1: 0-15 PSIG (0-1 BAR) | 0-30 PSIG/ 0-200 kPa | 1: 0-15 PSIG (0-1 BAR) | 0-30 PSIG/ 0-200 kPa | 1: 0-15 PSIG (0-1 BAR) | 0-30 PSIG/ 0-200 kPa | 1: 0-15 PSIG (0-1 BAR) | 0-30 PSIG/ 0-200 kPa |
| | S: 316L stainless steel 327 Series regulators | A: 0-15 PSIG (0-1 BAR) | 0-2 BAR/ 0-30 PSIG | A: 0-15 PSIG (0-1 BAR) | 0-2 BAR/ 0-30 PSIG | A: 0-15 PzSIG (0-1 BAR) | 0-2 BAR/ 0-30 PSIG | A: 0-15 PSIG (0-1 BAR) | 0-2 BAR/ 0-30 PSIG |
| | | 2: 0-30 PSIG (0-2 BAR) | 0-60 PSIG/ 0-400 kPa | 2: 0-30 PSIG (0-2 BAR) | 0-60 PSIG/ 0-400 kPa | 2: 0-30 PSIG (0-2 BAR) | 0-60 PSIG/ 0-400 kPa | 2: 0-30 PSIG (0-2 BAR) | 0-60 PSIG/ 0-400 kPa |
| | | B: 0-30 PSIG (0-2 BAR) | 0-4 BAR/ 0-60 PSIG | B: 0-30 PSIG (0-2 BAR) | 0-4 BAR/ 0-60 PSIG | B: 0-30 PSIG (0-2 BAR) | 0-4 BAR/ 0-60 PSIG | B: 0-30 PSIG (0-2 BAR) | 0-4 BAR/ 0-60 PSIG |
| | | 3: 0-50 PSIG (0-3.5 BAR) | 0-100 PSIG/ 0-700 kPa | 3: 0-50 PSIG (0-3.5 BAR) | 0-100 PSIG/ 0-700 kPa | 3: 0-50 PSIG (0-3.5 BAR) | 0-100 PSIG/ 0-700 kPa | 3: 0-50 PSIG (0-3.5 BAR) | 0-100 PSIG/ 0-700 kPa |
| | | C: 0-50 PSIG (0-3.5 BAR) | 0-7 BAR/ 0-100 PSIG | C: 0-50 PSIG (0-3.5 BAR) | 0-7 BAR/ 0-100 PSIG | C: 0-50 PSIG (0-3.5 BAR) | 0-7 BAR/ 0-100 PSIG | C: 0-50 PSIG (0-3.5 BAR) | 0-7 BAR/ 0-100 PSIG |
| | | 4: 0-150 PSIG (0-10 BAR) | 0-200 PSIG/ 0-1400 kPa | 4: 0-150 PSIG (0-10 BAR) | 0-200 PSIG/ 0-1400 kPa | 4: 0-150 PSIG (0-10 BAR) | 0-200 PSIG/ 0-1400 kPa | 4: 0-150 PSIG (0-10 BAR) | 0-200 PSIG/ 0-1400 kPa |
| | | D: 0-150 PSIG (0-10 BAR) | 0-14 BAR/ 0-200 PSIG | D: 0-150 PSIG (0-10 BAR) | 0-14 BAR/ 0-200 PSIG | D: 0-150 PSIG (0-10 BAR) | 0-14 BAR/ 0-200 PSIG | D: 0-150 PSIG (0-10 BAR) | 0-14 BAR/ 0-200 PSIG |
| | | 5: 0-100 PSIG (0-7 BAR) | 0-200 PSIG/ 0-1400 kPa | 5: 0-100 PSIG (0-7 BAR) | 0-200 PSIG/ 0-1400 kPa | 5: 0-100 PSIG (0-7 BAR) | 0-200 PSIG/ 0-1400 kPa | 5: 0-100 PSIG (0-7 BAR) | 0-200 PSIG/ 0-1400 kPa |
| | | E: 0-100 PSIG (7 BAR) | 0-14 BAR/ 0-200 PSIG | E: 0-100 PSIG (7 BAR) | 0-14 BAR/ 0-200 PSIG | E: 0-100 PSIG (7 BAR) | 0-14 BAR/ 0-200 PSIG | E: 0-100 PSIG (7 BAR) | 0-14 BAR/ 0-200 PSIG |
| | | 6: 0-200 PSIG (0-14 BAR) | 0-400 PSIG/ 0-2800 kPa | 6: 0-200 PSIG (0-14 BAR) | 0-400 PSIG/ 0-2800 kPa | 6: 0-200 PSIG (0-14 BAR) | 0-400 PSIG/ 0-2800 kPa | 6: 0-200 PSIG (0-14 BAR) | 0-400 PSIG/ 0-2800 kPa |
| | | F: 0-200 PSIG (0-14 BAR) | 0-28 BAR/ 0-400 PSIG | F: 0-200 PSIG (0-14 BAR) | 0-28 BAR/ 0-400 PSIG | F: 0-200 PSIG (0-14 BAR) | 0-28 BAR/ 0-400 PSIG | F: 0-200 PSIG (0-14 BAR) | 0-28 BAR/ 0-400 PSIG |