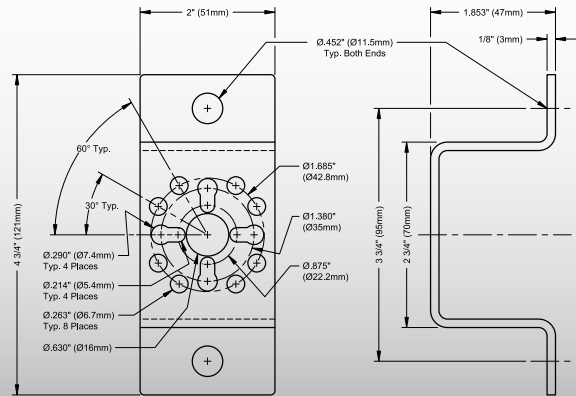
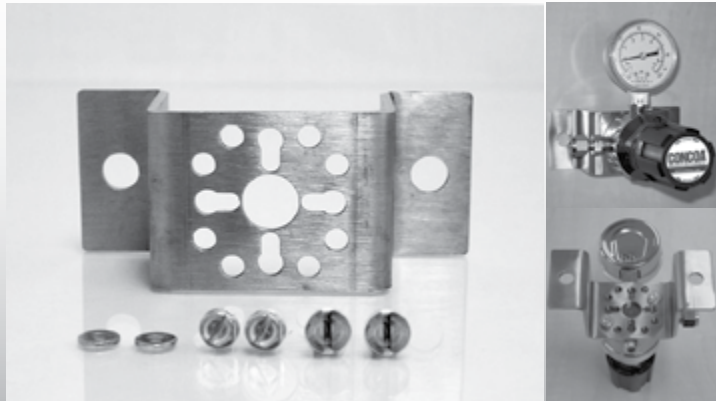


Regulator Mounting Bracket

The Universal Regulator Mounting Kit 835 0204 provides an easy and secure option to mount any of CONCOA's single stage 400 or 300 Series regulators. The kit comes with a sturdy 1/8" thick brushed stainless 'U' bracket, bolts, and washers to fit both 10-32 UNF and 1/4- 20 UNC-2B mounting holes. Multiple hole patterns accommodate any orientation and the 16mm center hole allows for use with rear inlet regulators.



Ordering Information

Order No.	Description
835 0204	Universal 400 & 300 Series regulator mounting kit

Cylinder Brackets and Chains

Cylinder brackets are designed to secure up to three cylinders of normal or smaller size. The chain set assists in securing the cylinders and can be installed without removing the bracket from the wall or structure.



Materials and Specifications

Bracket Material	11 gauge hot rolled steel
Strap Material	Polypropylene with steel cinch buckle
Cylinder Diameter	Up to 14" (356mm) - 518 1611 Up to 12" (305mm) - 518 1612 4" to 14" (101.6 to 356mm) - 518 1614
Mounting Dimensions (518 1614)	Maximum bench thickness 1 3/4" (44mm)

Ordering Information

Order No.	Description	Dimensions (L x W x H)	Weight
518 1611	Single cylinder	8" x 2.25" x 4.25" (200mm x 57mm x 107mm)	3 lbs. (1.36 kg)
518 1612	Two cylinder	24" x 2.25" x 4.25" (600mm x 57mm x 107mm)	8 lbs. (3.63 kg)
518 1613	Three cylinder	36" x 2.25" x 4.25" (900mm x 57mm x 107mm)	10.7 lbs. (4.85 kg)
518 1614	Single cylinder bench	8" x 4.25" x 4.25" (200mm x 57mm x 107mm)	4.5 lbs. (2.04 kg)
518 1615	Long chain set	41" (1041mm)	1 lb. (0.45 kg)