

# 206 SERIES REGULATORS



The 206 Series regulators are designed for primary pressure control of gases supplied from cryogenic liquid cylinders. These single-stage regulators feature a chrome-plated forged brass body and a 316L stainless steel diaphragm, ensuring durability and high performance. Though optimized for flow with liquid cylinders, the CONCOA 206 Series regulators are rated up to 3000 PSIG (210 BAR) inlet pressure, making them suitable for high-pressure applications. With a four-port configuration, they provide reliable and precise control in various industrial and laboratory applications.

## Typical Applications

- Control of Cryogenic Gases
- Point-of Use Laboratory Systems
- Bulk Gas Distribution Systems
- High Pressure Gas Cylinders



206 3021-01-580 shown

## Features

**Standard Relief Valve** protects diaphragm and gauge

**316L Stainless Steel Diaphragm** prevents inboard diffusion

**CAPSULE® Seat Technology** increases product serviceability and life

**3000 PSIG (210 BAR) Inlet Pressure Rating** permits safe use with high pressure cylinders

## Materials and Specifications

**Maximum Inlet Pressure (bare body):** 3000 PSIG (210 BAR)

**Body:** Chrome-plated forged brass

**Bonnet:** Chrome-plated die cast zinc

**Gauges:** 2 1/2 in (68 mm) diameter plated case

**Seat:** PTFE

**Filter:** 10-micron sintered bronze

**Temperature Range:** -40°F to 140°F (-40°C to 60°C)

**Diaphragm:** 316L Stainless steel

**Cv:** 0.28

**Helium Leak Integrity** 1 x 10<sup>-8</sup> scc/sec

**Internal Seals:** PTFE

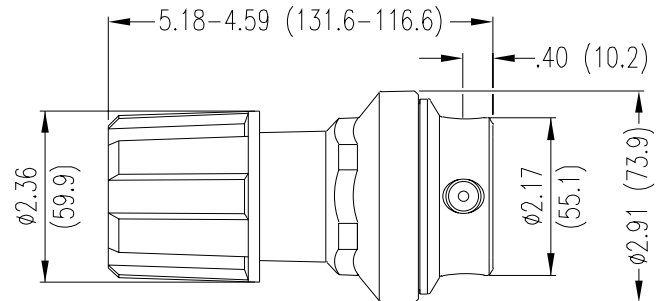
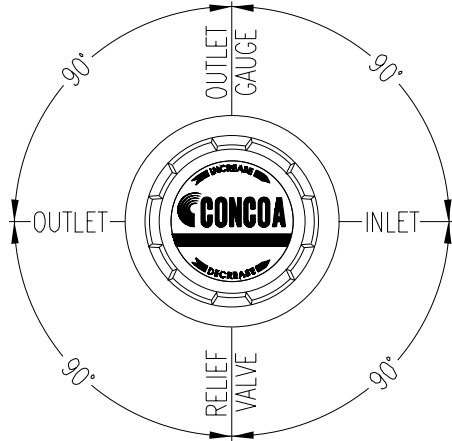
**Ports (bare body):** 1/4 in FNPT

**Conformances:** Cleanliness meets or exceeds CGA G-4.1; PED 2014/68/EU; ANSI/ASME B40.1; CRN OH5216

# 206 SERIES REGULATORS



## Installation Dimensions



## Ordering Information

206	A	B	C	D	-CON	Options	
Series 206	Outlet Pressure	Outlet Gauge	Inlet Gauge	Outlet Assemblies	Assembly Gauges	Inlet Connections	Installed Options
	<b>1:</b> 0-15 PSIG (0-1 BAR)	0-30 PSIG/ 0-2 BAR	<b>0:</b> None	<b>0:</b> 1/4" FPT port	<b>0:</b> Bare body	<b>000:</b> 1/4" FPT	<b>B:</b> Protocol alarm station with pressure switch gauges
	<b>2:</b> 0-40 PSIG (0-3 BAR)	0-60 PSIG/ 0-4 BAR		<b>1:</b> 1/4" MPT	<b>1:</b> Standard assembly (PSIG/kPa gauges)	<b>TF2:</b> 1/8" tube	<b>C:</b> Protocol switchover station
	<b>3:</b> 0-120 PSIG (0-8 BAR)	0-200 PSIG/ 0-14 BAR		<b>2:</b> 1/4" tube fitting	<b>2:</b> Standard assembly (BAR/PSIG gauges)	<b>TF4:</b> 1/4" tube	<b>E:</b> Protocol alarm station with intrinsically safe transducer for hazardous environments
	<b>4:</b> 0-200 PSIG (0-14 BAR)	0-400 PSIG/ 0-27 BAR		<b>3:</b> Diaphragm valve 1/4" tube fitting		<b>TF6:</b> 3/8" tube	<b>H:</b> Protocol switchover alarm station with pressure switch gauges
				<b>4:</b> Diaphragm valve 1/4" MPT		<b>M06:</b> 6mm tube	<b>J:</b> Protocol alarm station with standard transducer for non-hazardous environments
				<b>5:</b> Needle valve 1/4" MPT		CGA DIN 477 BS 341 and others available	<b>K:</b> Protocol switchover alarm station with standard transducer for non hazardous environments
				<b>6:</b> 1/8" tube fitting			<b>M:</b> Protocol station
				<b>7:</b> 3/8" tube fitting			<b>Q:</b> Protocol purge station
				<b>8:</b> Diaphragm valve 1/8" tube fitting			<b>X:</b> Protocol switchover alarm station with intrinsically safe transducer for hazardous environments
				<b>9:</b> Diaphragm valve 1/4" FPT			
				<b>A:</b> 3/8" BSP RH fitting			
				<b>B:</b> Diaphragm valve 3/8" tube fitting			
				<b>C:</b> 3/8" BSP LH fitting			
				<b>D:</b> 6 mm brass hose barb			
				<b>G:</b> 1/8" stainless steel tube fitting			
				<b>H:</b> 1/4" stainless steel tube fitting			
				<b>M:</b> 6mm tube fitting			
				<b>S:</b> Diaphragm valve 6mm tube fitting			

# REGULATOR FLOW CURVES



## Flow Curves for 205, 206 Series

